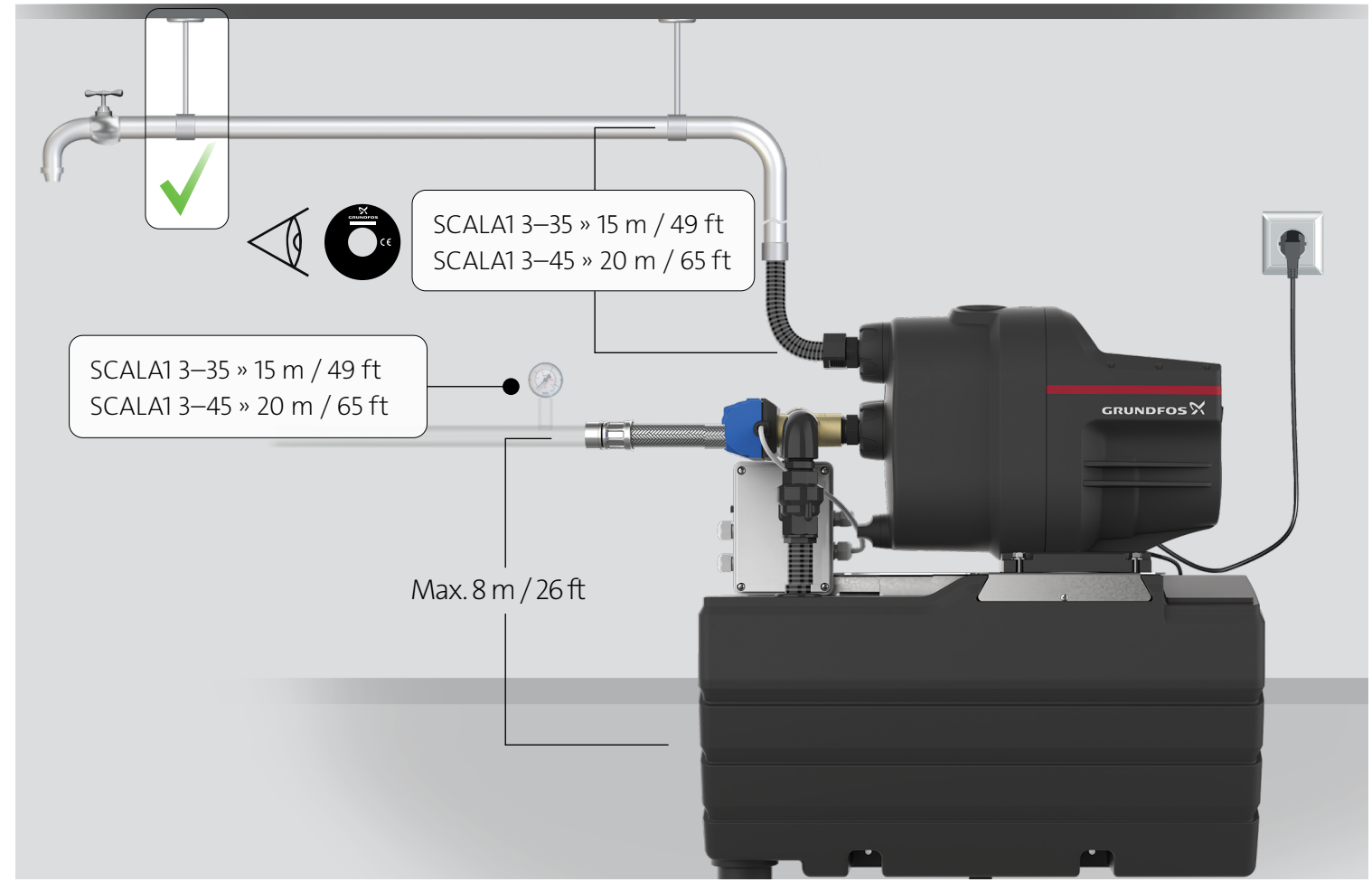
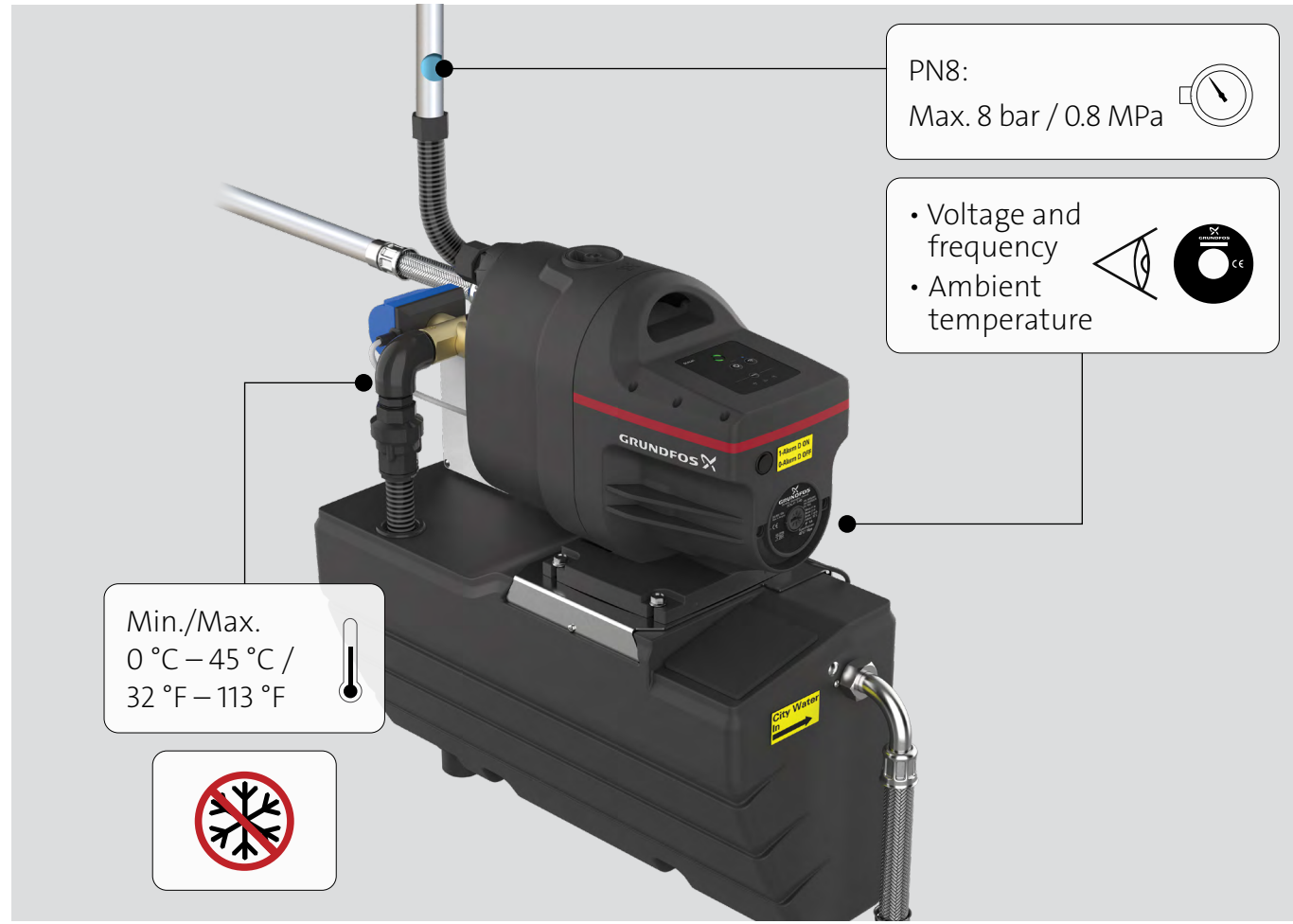
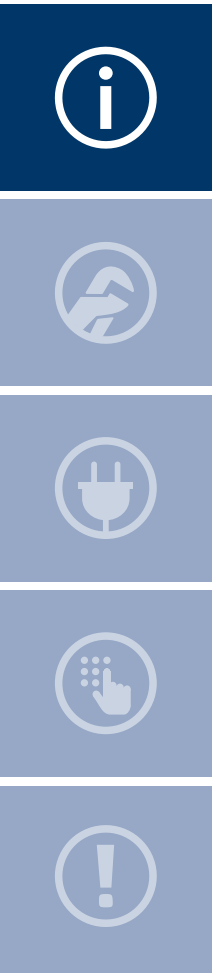
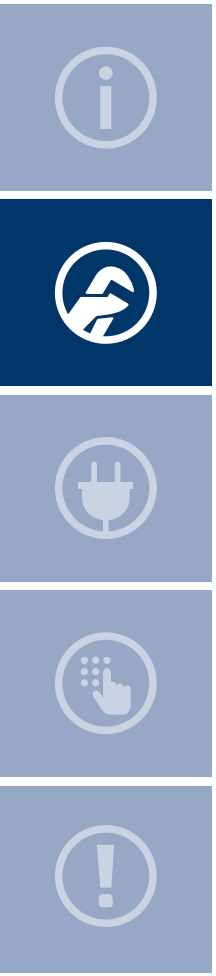




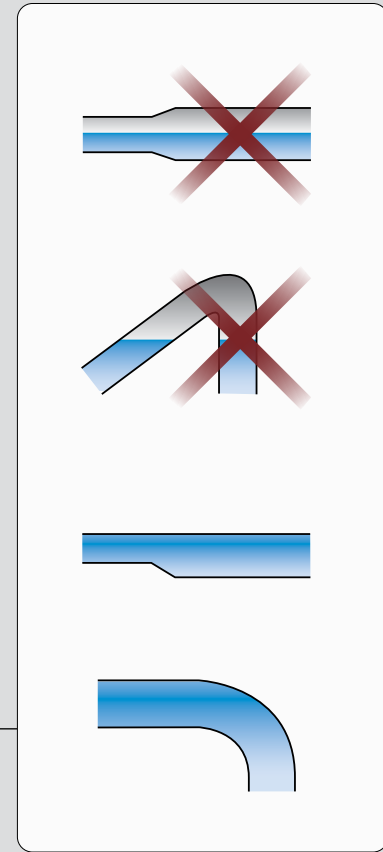
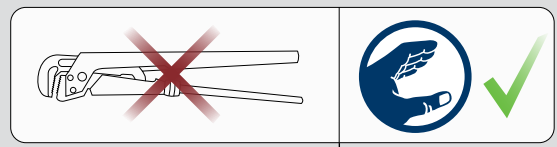
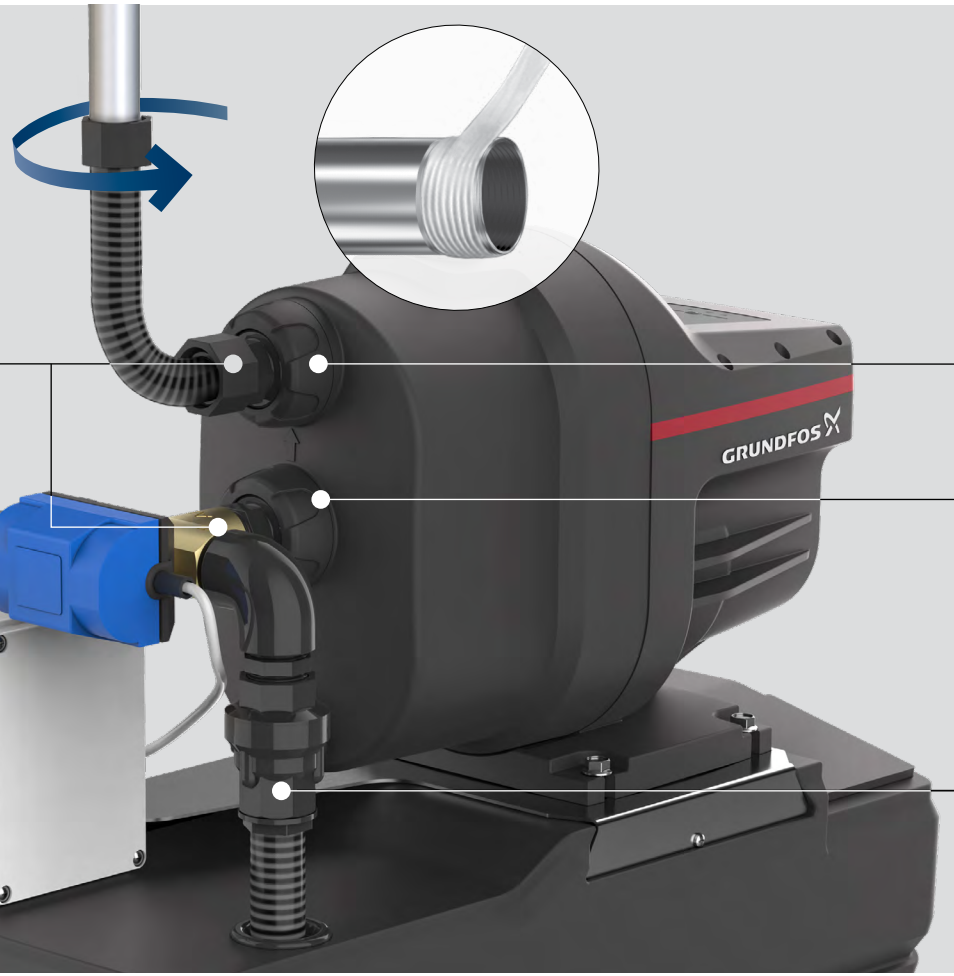
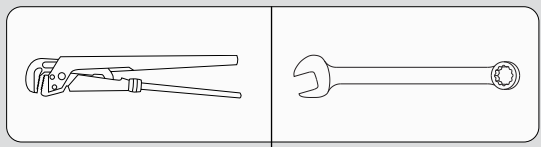
SCALA1 SYSTEM

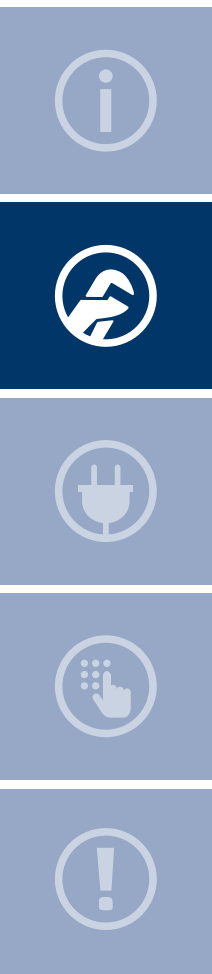


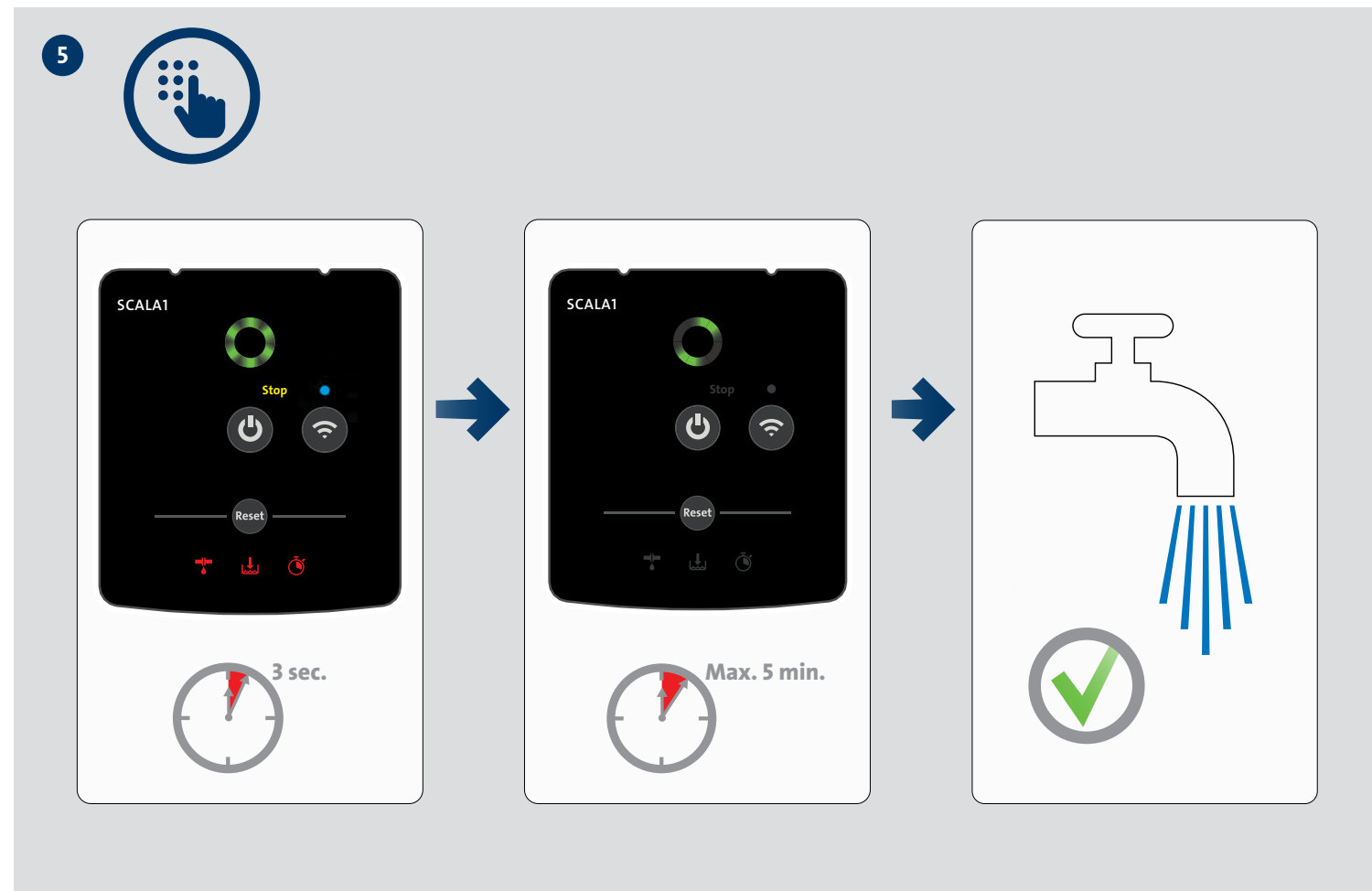
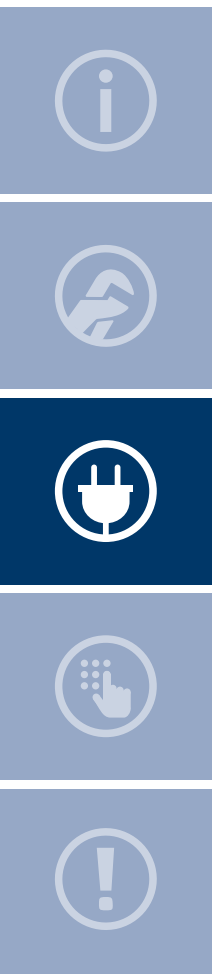


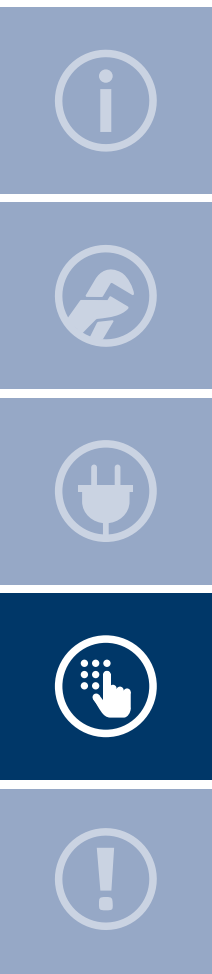


1

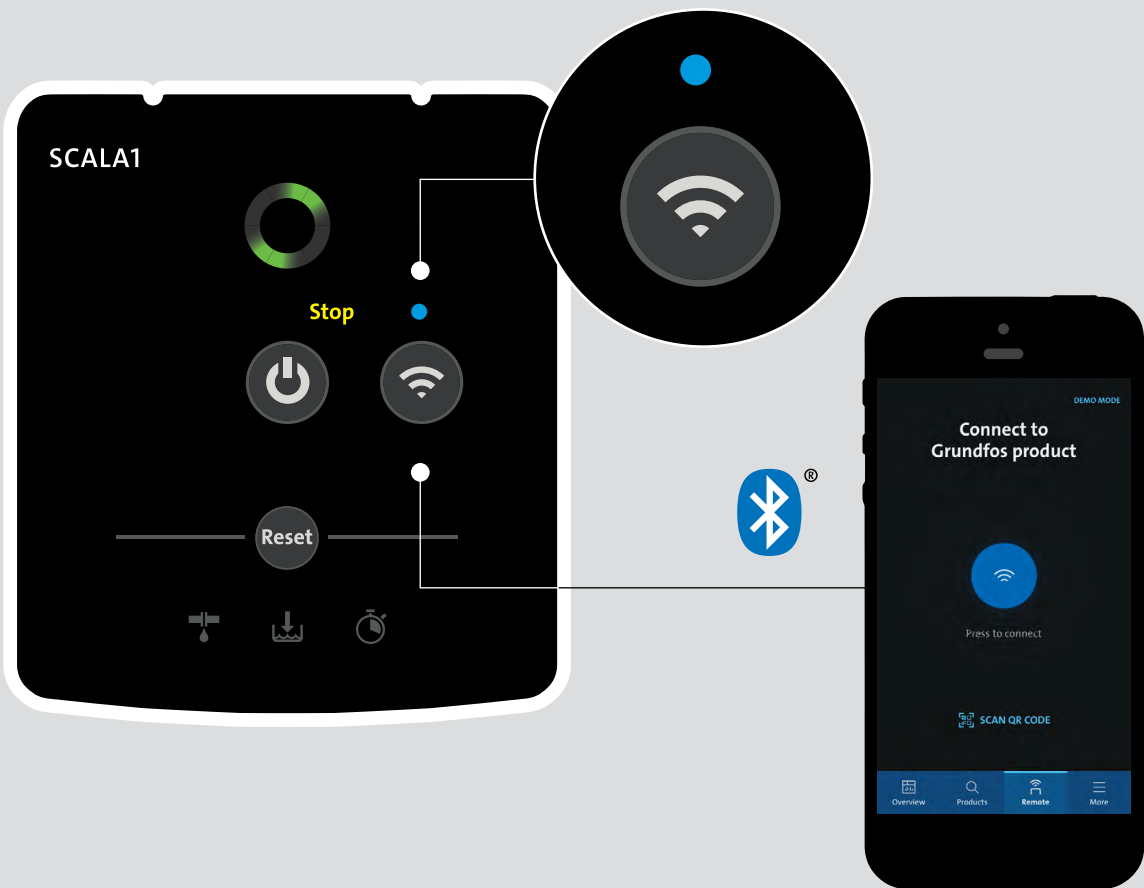






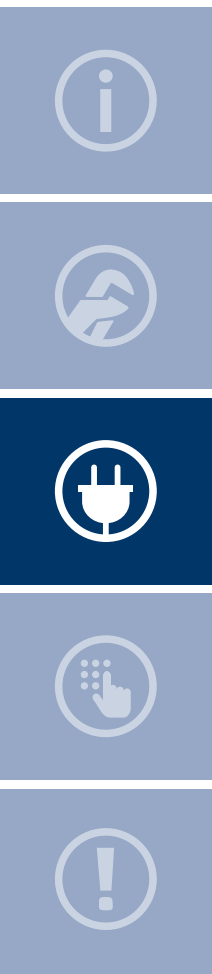


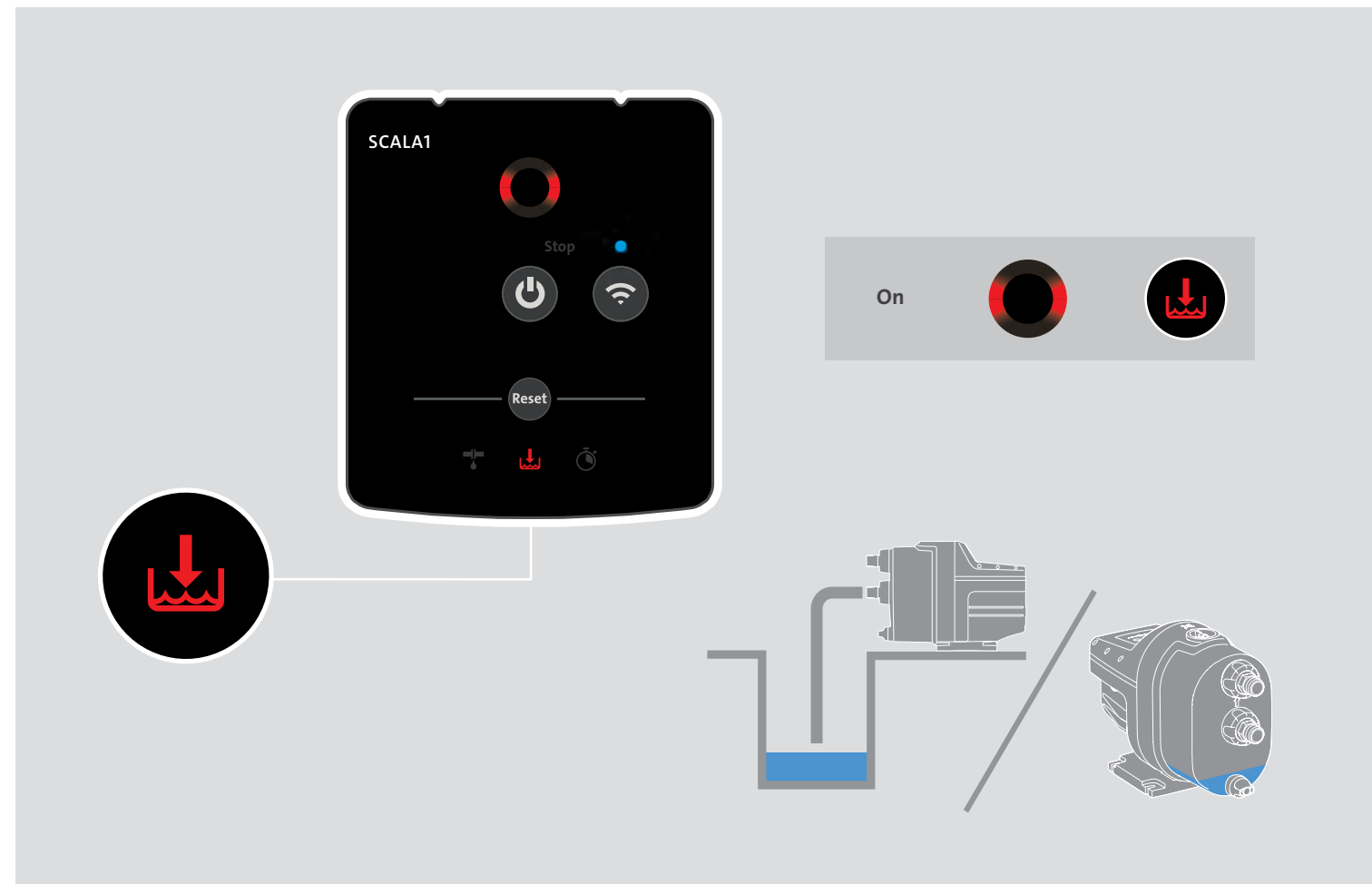
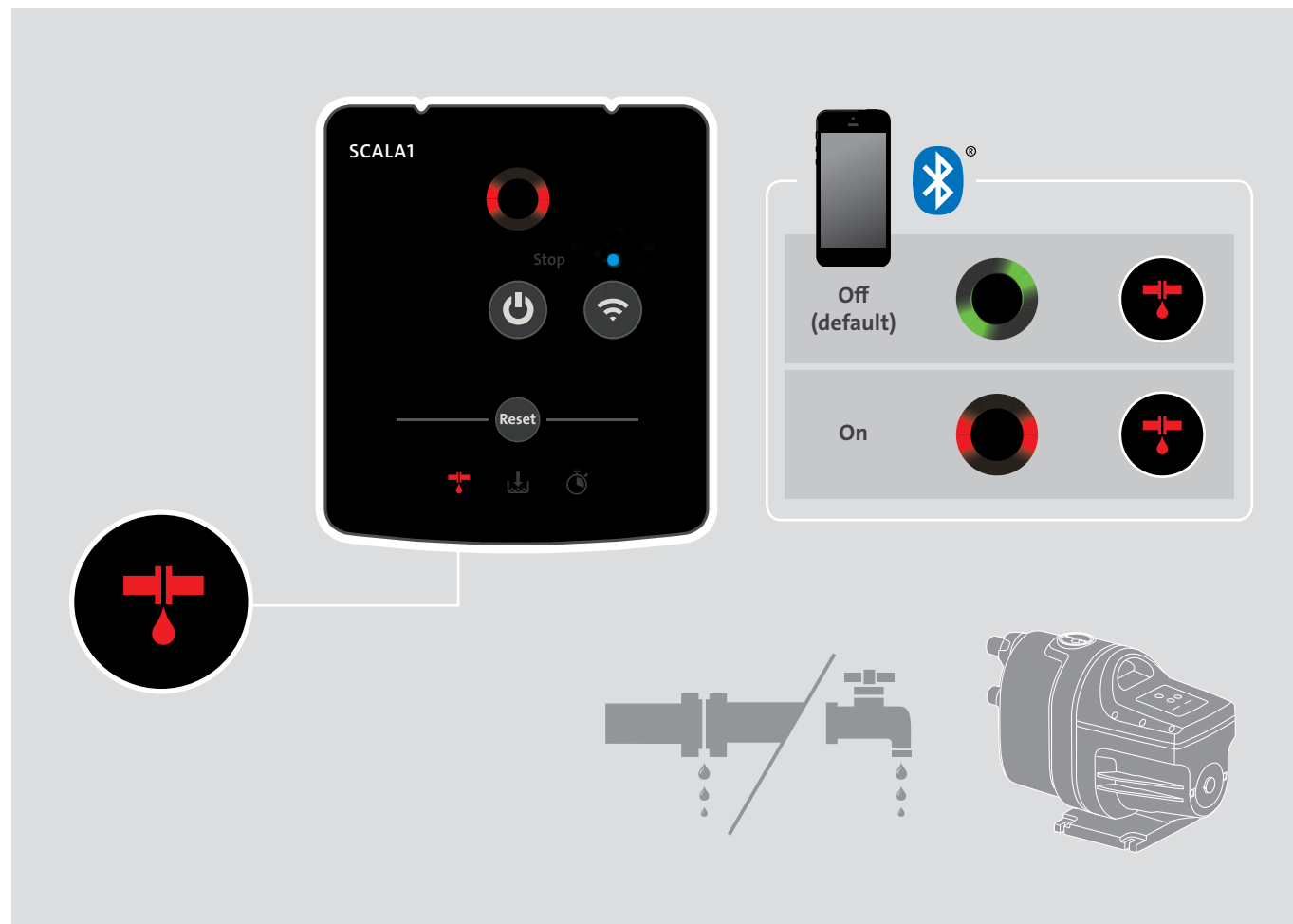
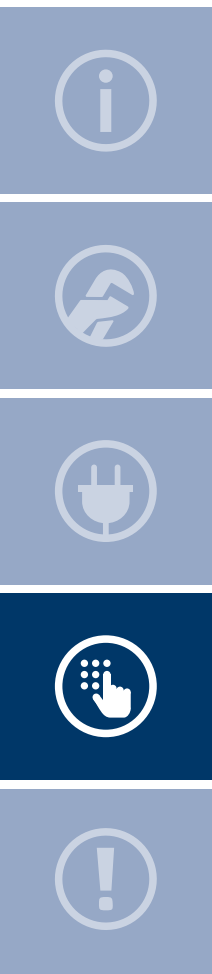
6

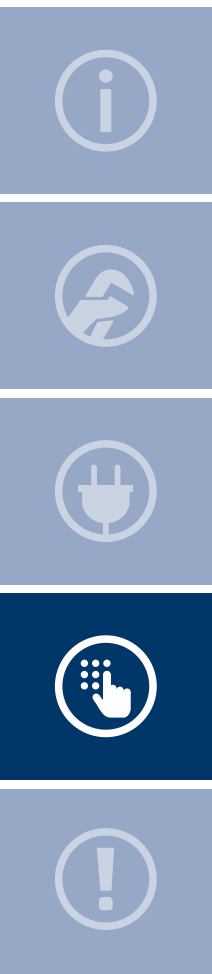


7









SCALA1

Stop

Off (default)

On

30 min.

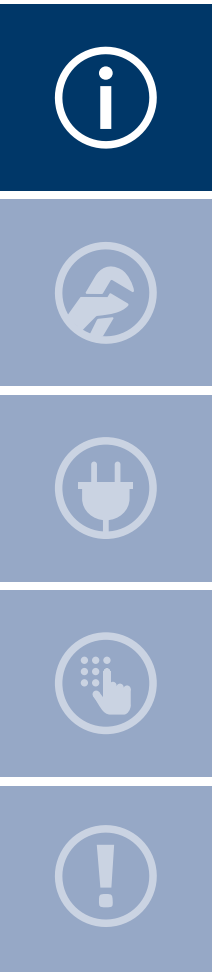
Diagram illustrating the SCALA1 control panel interface. The panel shows a power button, a stop button, a reset button, and an alarm icon. A callout shows a smartphone connected via Bluetooth to the panel, with a green indicator for 'Off (default)' and a red indicator for 'On'. A diagram shows a faucet with water flowing, leading to a 30-minute timer icon.

GRUNDFOS

1-Alarm D ON
0-Alarm D OFF

Reset

Diagram showing the physical GRUNDFOS SCALA1 pump unit. The unit is black with a red stripe and features a control panel with a power button, stop button, and reset button. A yellow label on the side indicates '1-Alarm D ON' and '0-Alarm D OFF'. A callout shows a smartphone screen displaying a 'Reset' button and three red icons: a water tap with a drop, a water level icon, and an alarm icon. A QR code is shown below the callout, with a person icon reading a QR code above it.





92585527

ECM: 1375564

09.2023

GRUNDFOS Holding A/S
Poul Due Jensens Vej 7
DK-8850 Bjerringbro
Tel: +45 87 50 14 00
www.grundfos.com

GRUNDFOS